

Room Finish Schedule

Room No.	Room Name	Floor		South		West		North		East		Ceiling		Remarks
		Mat.	Base	Mat.	Finish	Mat.	Finish	Mat.	Finish	Mat.	Finish	Mat.	Finish	
101	Vestibule	WC	RB	GB	PT	GB	PT	GB	PT	GB	PT	SAT	FF	
102	Corridor	C	RB	GB	PT	GB	PT	GB	PT	GB	PT	SAT	FF	
103	Classroom	C	RB	GB	PT	GB	PT	GB	PT	GB	PT	SAT	FF	
104	Classroom	C	RB	GB	PT	GB	PT	GB	PT	GB	PT	SAT	FF	
105	Elec	SC	RB	GB	PT	GB	PT	GB	PT	GB	PT	ES	-	
106	Workroom	RF	RB	GB	PT	GB	PT	GB	PT	GB	PT	SAT	FF	
107	Staff	RF	RB	GB	FRP	GB	FRP	GB	FRP	GB	FRP	GB	PT	
108	Cust.	SC	RB	GB	PT	GB	PT	GB	FRP	GB	FRP	ES	-	
109	Girls	RF	RB	GB	FRP	GB	FRP	GB	FRP	GB	FRP	GB	PT	
110	Boys	RF	RB	GB	FRP	GB	FRP	GB	FRP	GB	FRP	GB	PT	
111	Classroom	C	RB	GB	PT	GB	PT	GB	PT	GB	PT	SAT	FF	
112	Classroom	C	RB	GB	PT	GB	PT	GB	PT	GB	PT	SAT	FF	
113	Vestibule	WC	RB	GB	PT	GB	PT	GB	PT	GB	PT	SAT	FF	

General Notes

- SEE SPECIFICATIONS FOR SUSPENDED ACOUSTICAL PANEL INSTALLATION REQUIREMENTS.
- SEE REFLECTED CEILING PLANS FOR CEILING HEIGHTS.
- COORDINATE WITH MECHANICAL AND ELECTRICAL DRAWINGS AND SPECIFICATIONS.
- SEE SPECIFICATIONS FOR ALLOWABLE NUMBER OF COLOR AND PATTERNS PER ROOM AND / OR MATERIAL.



2400 E. Riverwalk Drive
Boise, Idaho 83706

www.lkvarchitects.com
208.336.3443

Keyed Notes

FLOORS

- C CARPET
- WC WALK-OFF CARPET
- SC SEALED CONCRETE
- LVT LUXURY VINYL TILE
- RF RESILIENT SHEET FLOORING

BASE

- RB COVERED RUBBER BASE 4"

WALLS

- CMU CONCRETE MASONRY UNITS
- FRP FIBERGLASS REINFORCED PANELS
- GB GYPSUM BOARD
- AGB ABUSE RESISTANT GYPSUM BOARD
- CT CERAMIC WALL TILE

CEILING

- ES EXPOSED STRUCTURE
- GB GYPSUM BOARD
- SAT SUSPENDED ACOUSTIC TILE

FINISHES

- EP EPOXY PAINT
- FACT FACTORY PAINT
- PNT PAINT

Reference Notes

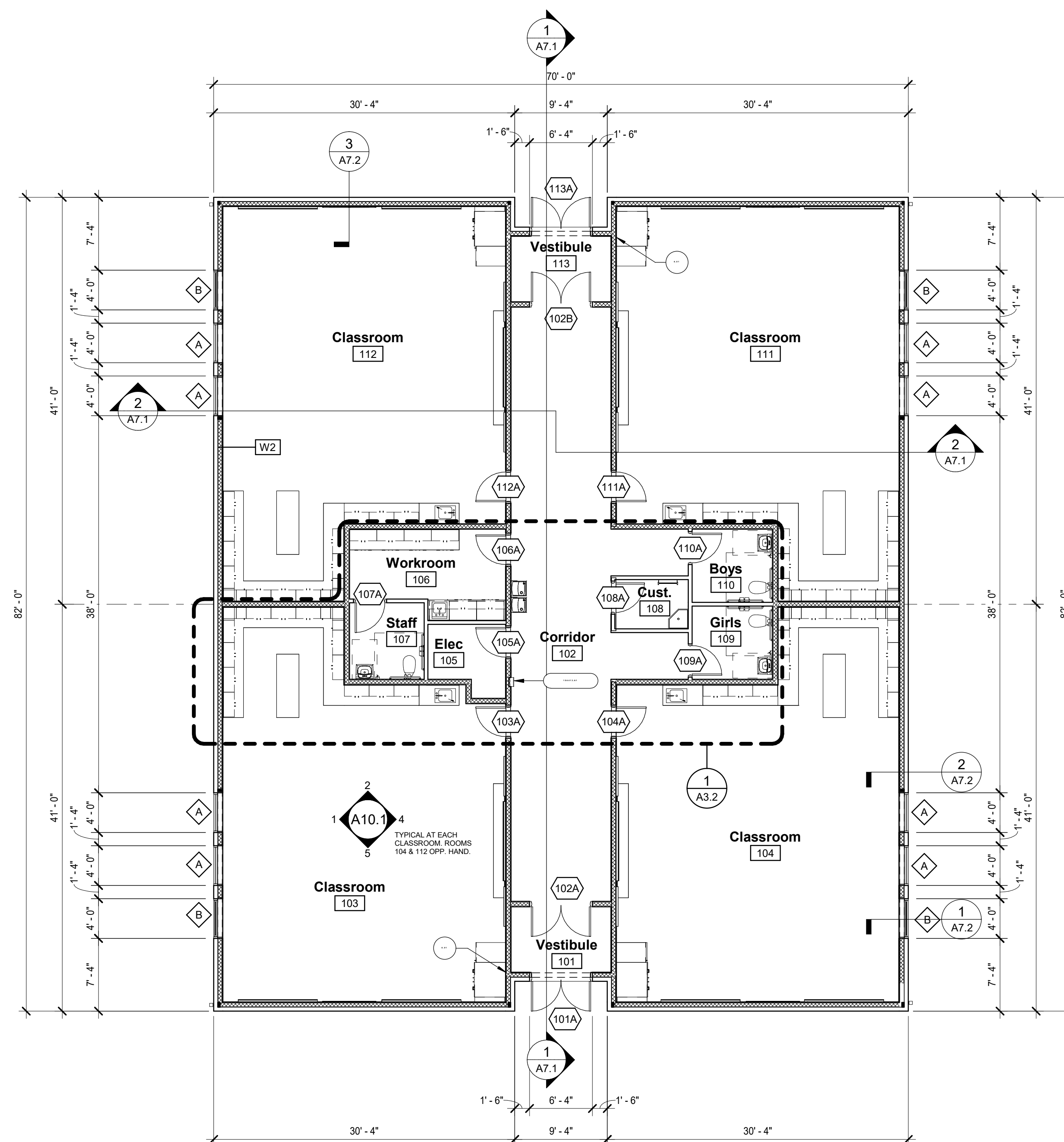
- ALIGN INTERIOR 2X6 CORRIDOR WALL TO EXTERIOR 2X6 WALL. TYPICAL

Keyed Notes

- 104413.A1 FIRE EXTINGUISHER CABINET, SEMI-RECESSED

Keyed Notes

- TYPICAL EXTERIOR WALL: 2x6 STUD WALL FRAMING @ 16" O.C. W/ R-21 FIBERGLASS BATTS AND 4x4x16 CMU VENEER.
- 2x6 STUD WALL FRAMING @ 16" O.C. W/ R-21 FULL HEIGHT FIBERGLASS BATTS.
- 2x4 STUD WALL FRAMING @ 16" O.C.



1 Floor Plan
1/8" = 1'-0"



A New Classroom Building
Mary McPherson Elementary
West Ada School District
1050 East Amity Road, Meridian, ID

DATE: Issue Date
LKV PROJECT #: 1808
REVISIONS:

DRAWN BY: gjb
CHECKED BY: Checker

Preliminary

DRAWING NO.:

A3.1
FLOOR PLAN