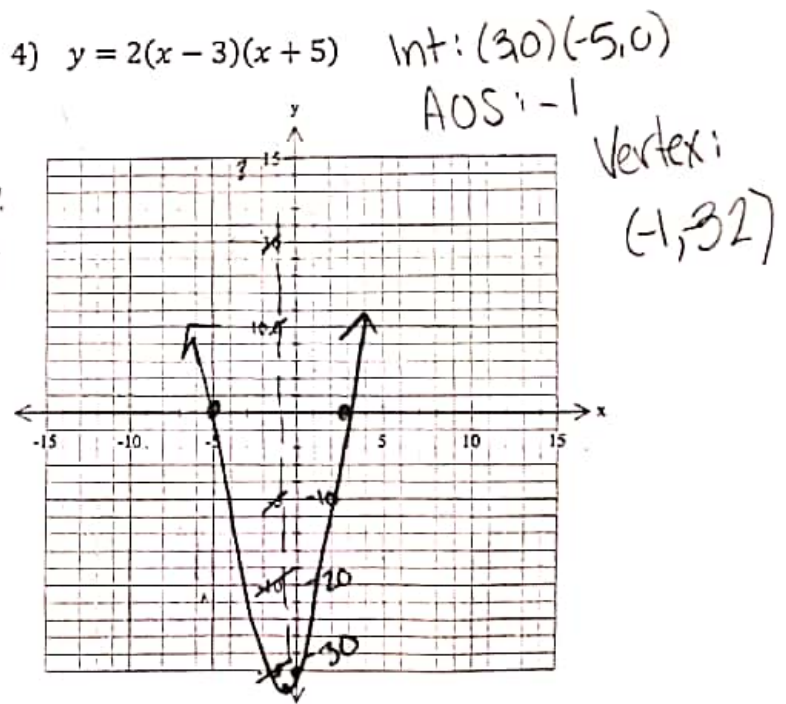
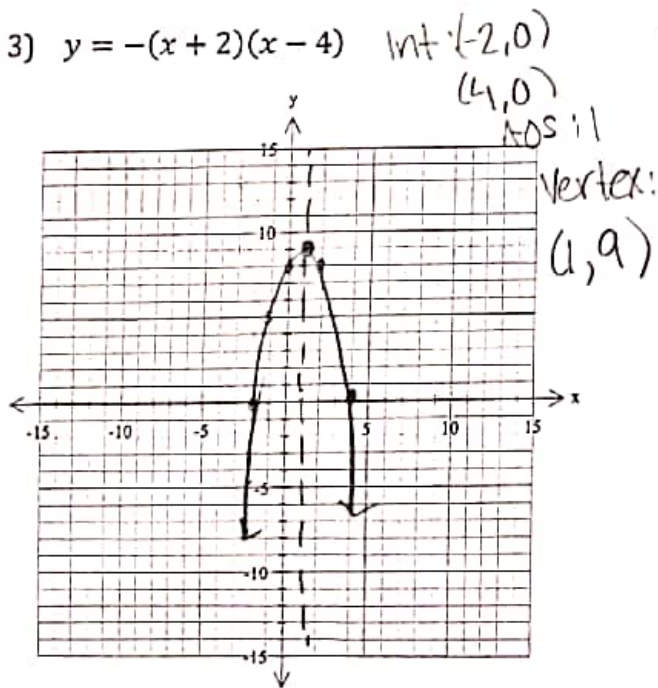
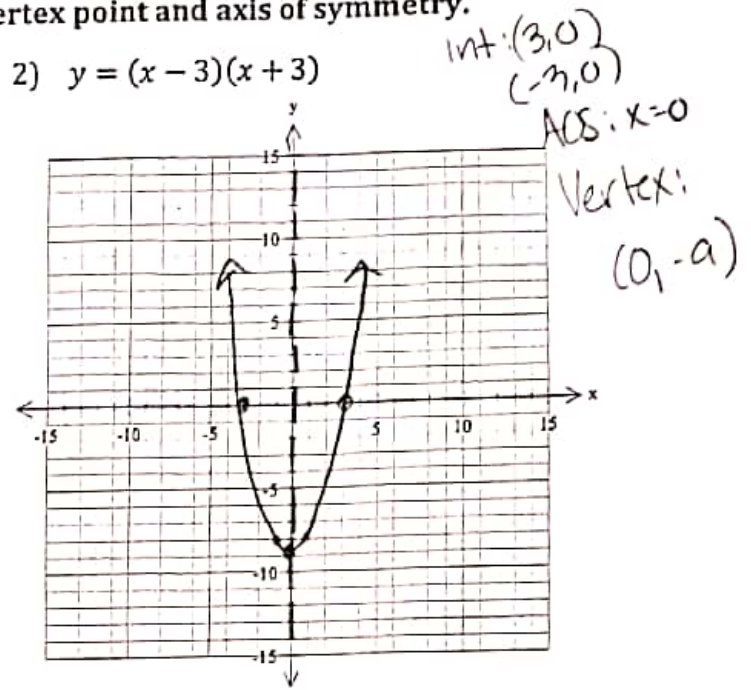
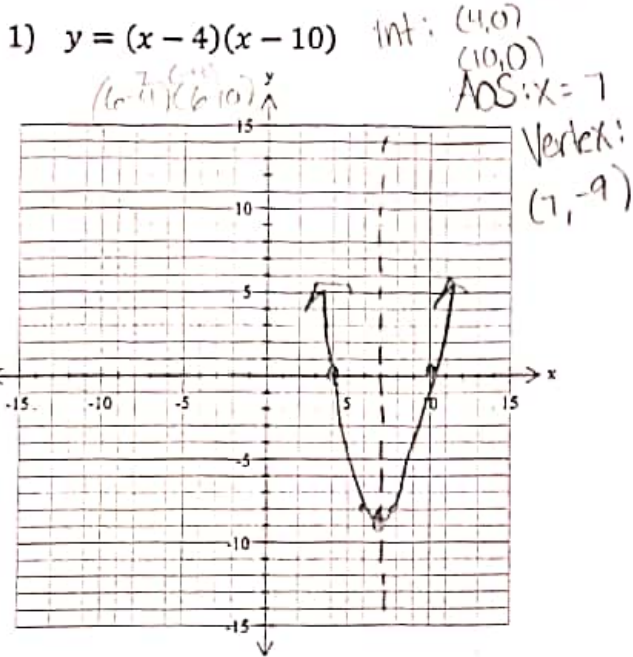


Key

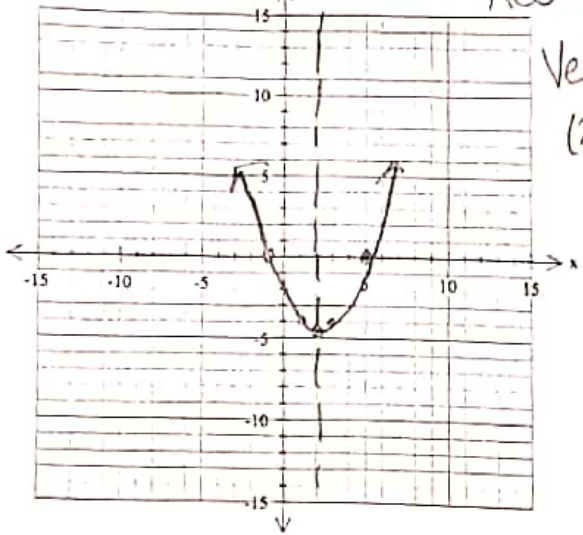
Period: \_\_\_\_\_ Date: \_\_\_\_\_

### Graphing Quadratics in Intercept Form

Graph each equation. Label the intercepts, vertex point and axis of symmetry.

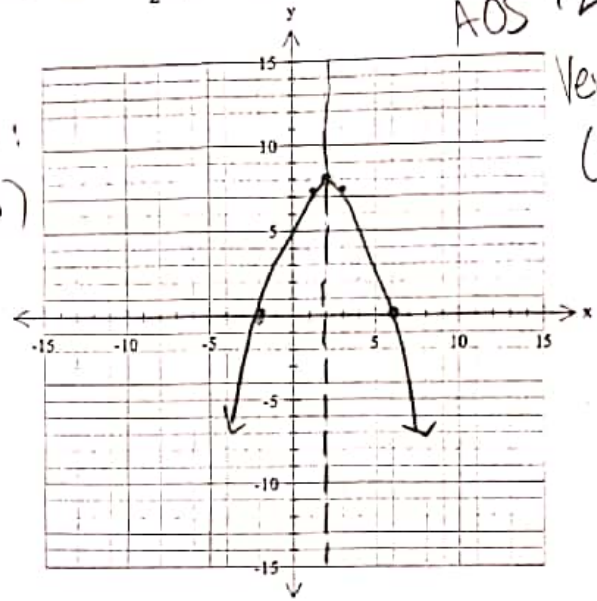


5)  $y = \frac{1}{2}(x-5)(x+1)$  Int: (5,0) (-1,0)  
 AOS: 2



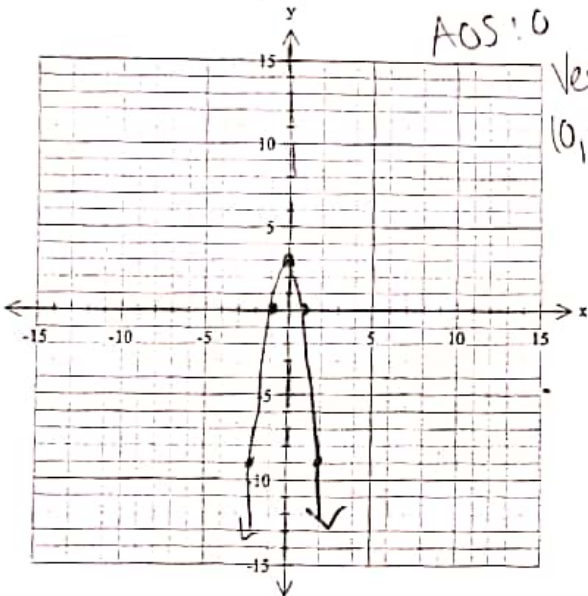
Vertex: (2, 4.5)

6)  $y = -\frac{1}{2}(x+2)(x-6)$  Int: (-2,0) (6,0)  
 AOS: 2



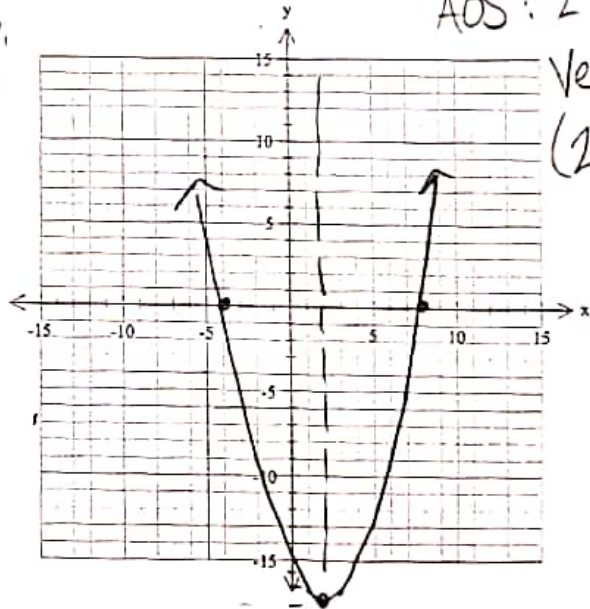
Vertex: (2, 8)

7)  $y = -3(x+1)(x-1)$  Int: (1,0) (-1,0)  
 AOS: 0



Vertex: (0, 3)

8)  $y = \frac{1}{2}(x-8)(x+4)$  Int: (8,0) (-4,0)  
 AOS: 2



Vertex: (2, -18)